

## Copella Boxford PET Air Conveyor Upgrade

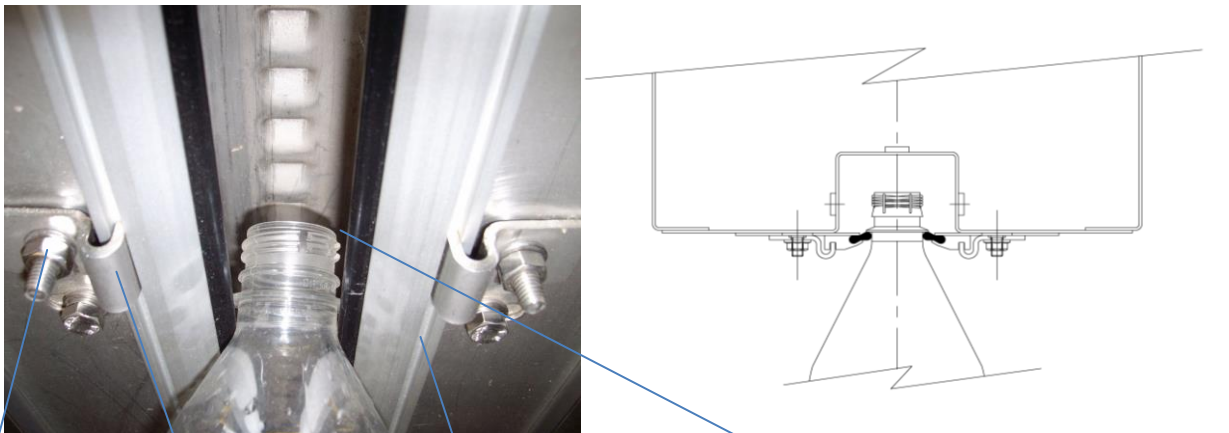
During the autumn of 2012 the air conveyor at Copella Boxford Suffolk was upgraded to run a new range of PET bottles. The upgrade consisted of a new automatic side guide system and our new Compere Glide neck guide system.

With the installation of the upgrade taking only the short time of five days to complete.

The new PET air conveyor neck handling system designed and installed by Compere Air Systems, providing the following advantages from the previous system on the air conveyor.

- Minimal Joints
- Can be replaced by non-skilled personnel
- Less joints giving a smooth bottle flow
- Less material used so replacement costs are minimal
- As the neck guide is fully clamped, small sections can be replaced
- Fully Clamped on straights and bends
- Can be retro-fitted to most existing air conveyor systems.
- Once set up, the guide rail can be replaced without the need to be reset
- Potential power savings

### The Neck Guide Assembly



Neck Guide Rail

Neck rail clip

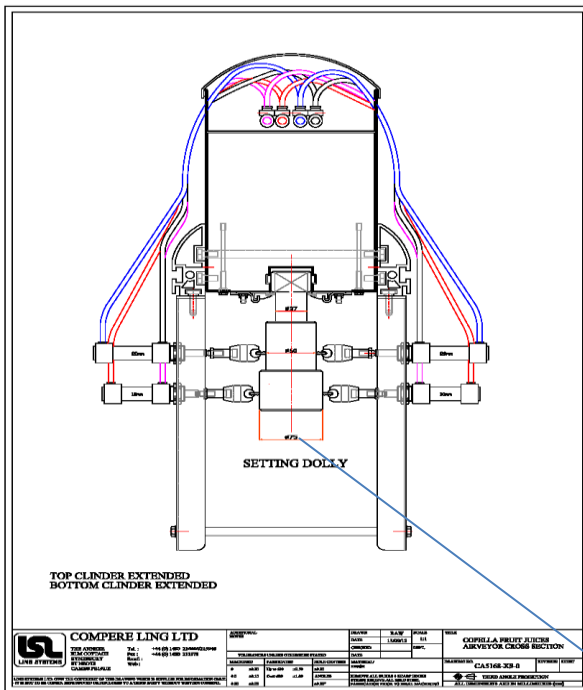
Neck Guide Holder

M6 Nut

## Copella Air Conveyor



## Bottle Side Guide Assembly



The side guides are set to specifically sized gauge which is measured for the running size of the bottle. The gauge centralises both the neck and side guides so the bottles hang perfectly vertical.

Since the upgrade of the Air Conveyor System the line has achieved efficiencies in excess of 99% with the following advantages.

- Fan speeds reduced by up to 15%, greatly reducing the energy used to power the fans.
- Reduction in neck guide spare parts due to the design, as only one replacement part is required.
- Planned maintenance to the Air Conveyor is minimal.

The installation of a Compere air handling system has been a great success.